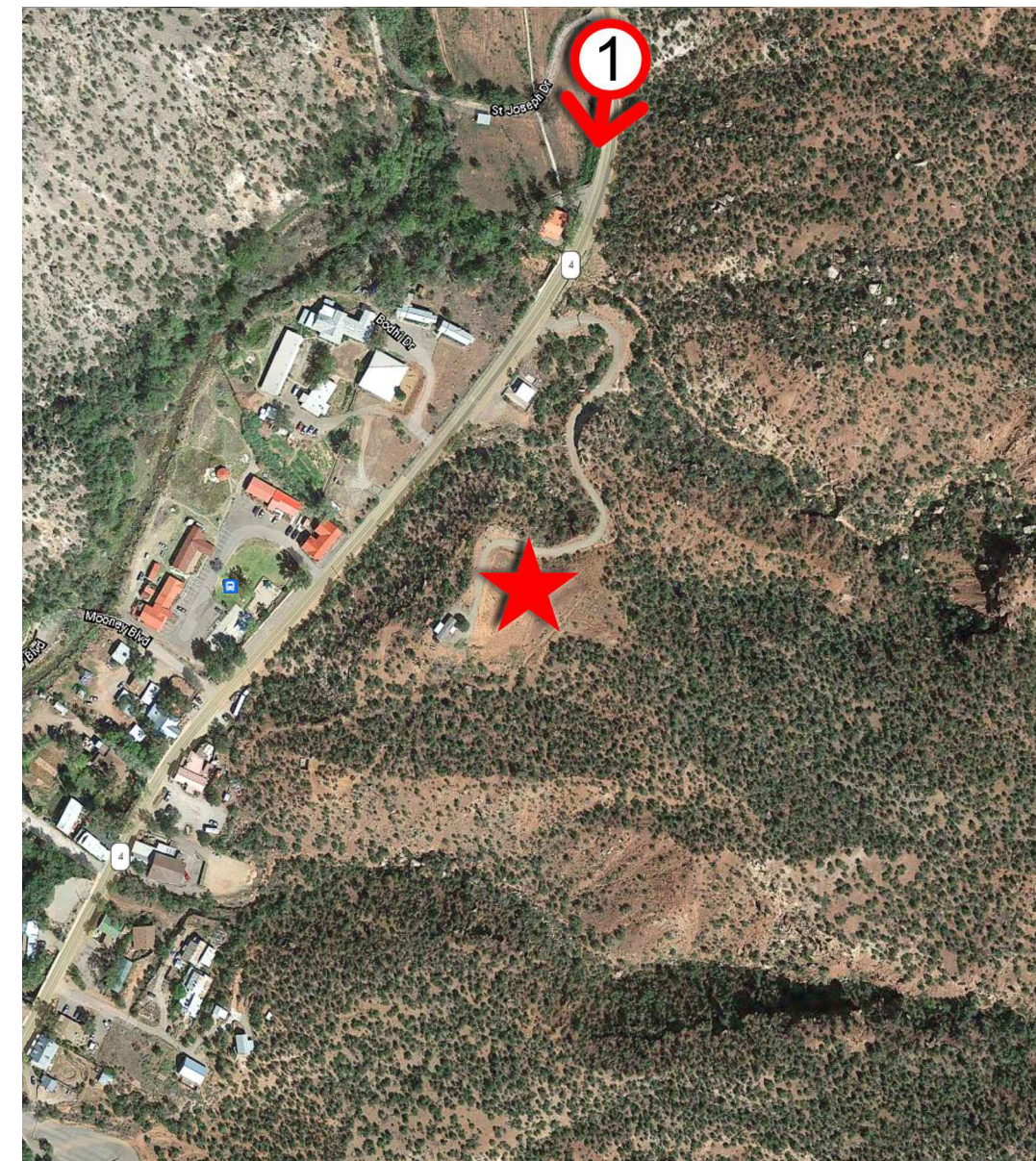
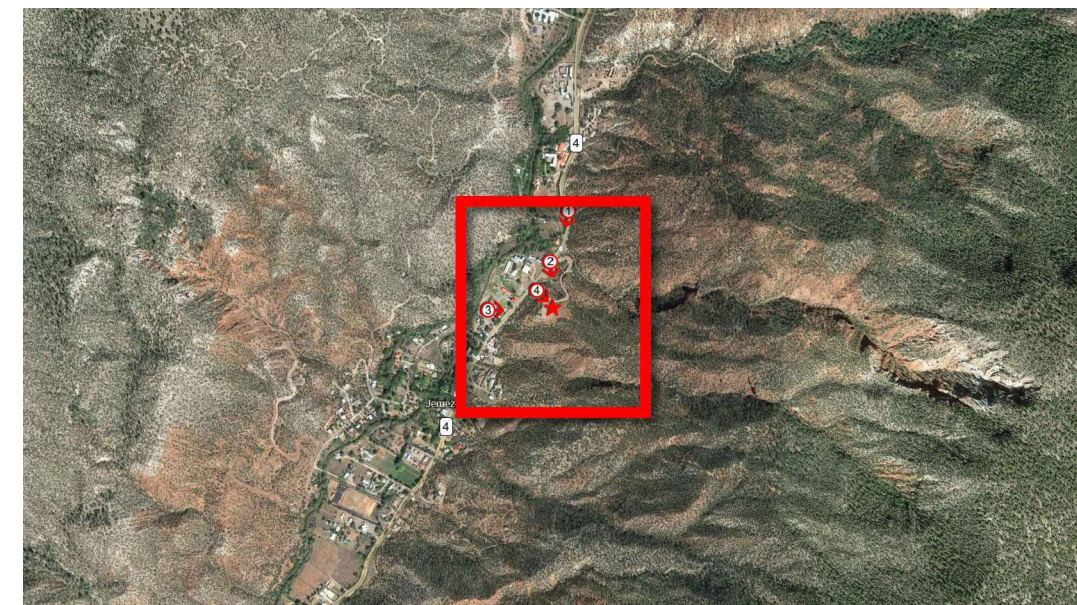
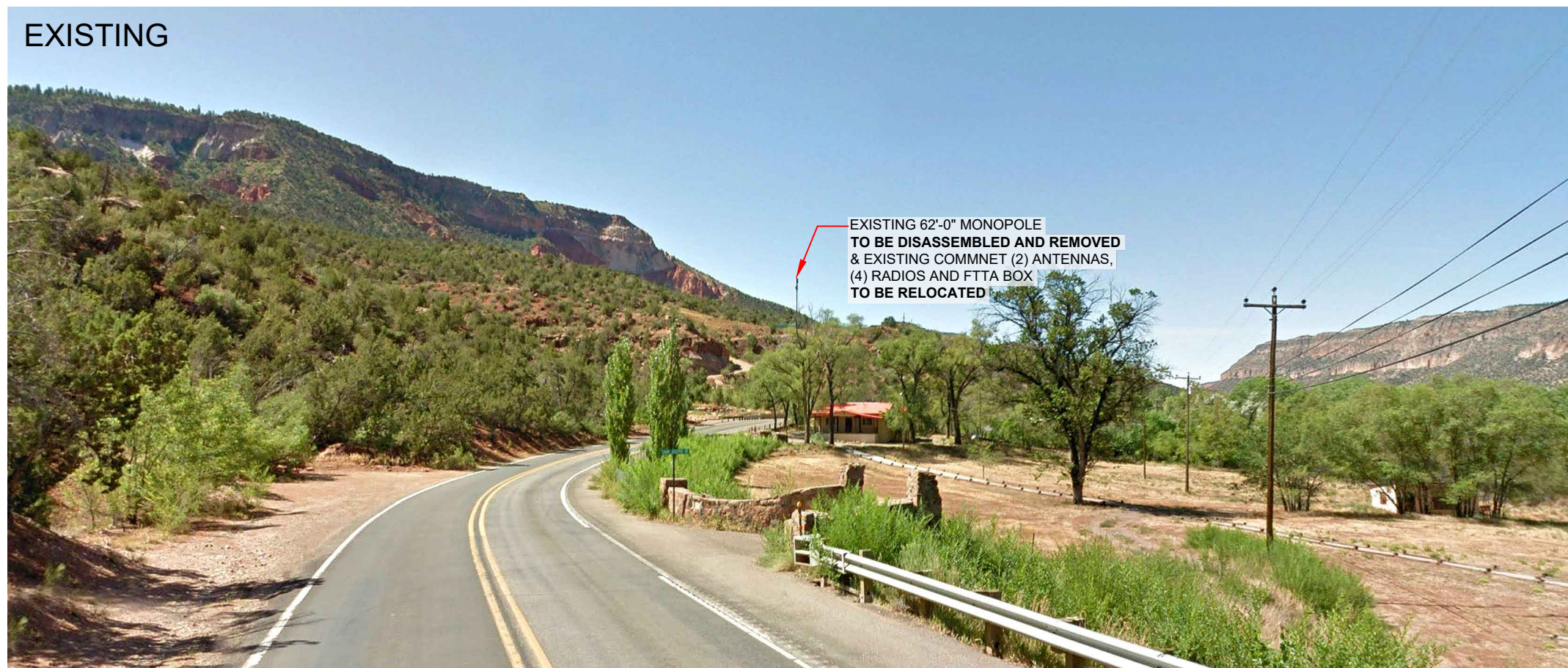


PHOTOSIMULATION VIEWPOINT 1

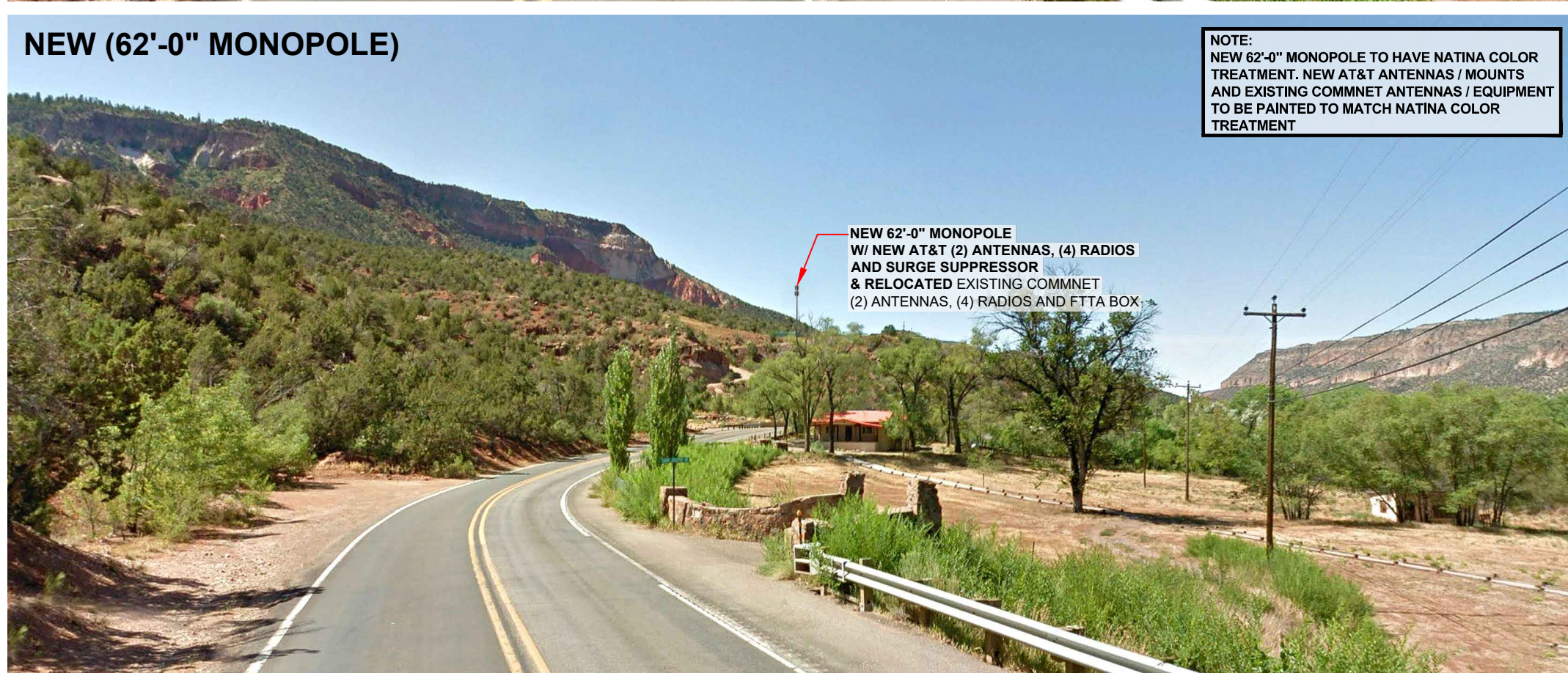


EXISTING



EXISTING 62'-0" MONOPOLE
TO BE DISASSEMBLED AND REMOVED
& EXISTING COMMNET (2) ANTENNAS,
(4) RADIOS AND FTTA BOX
TO BE RELOCATED

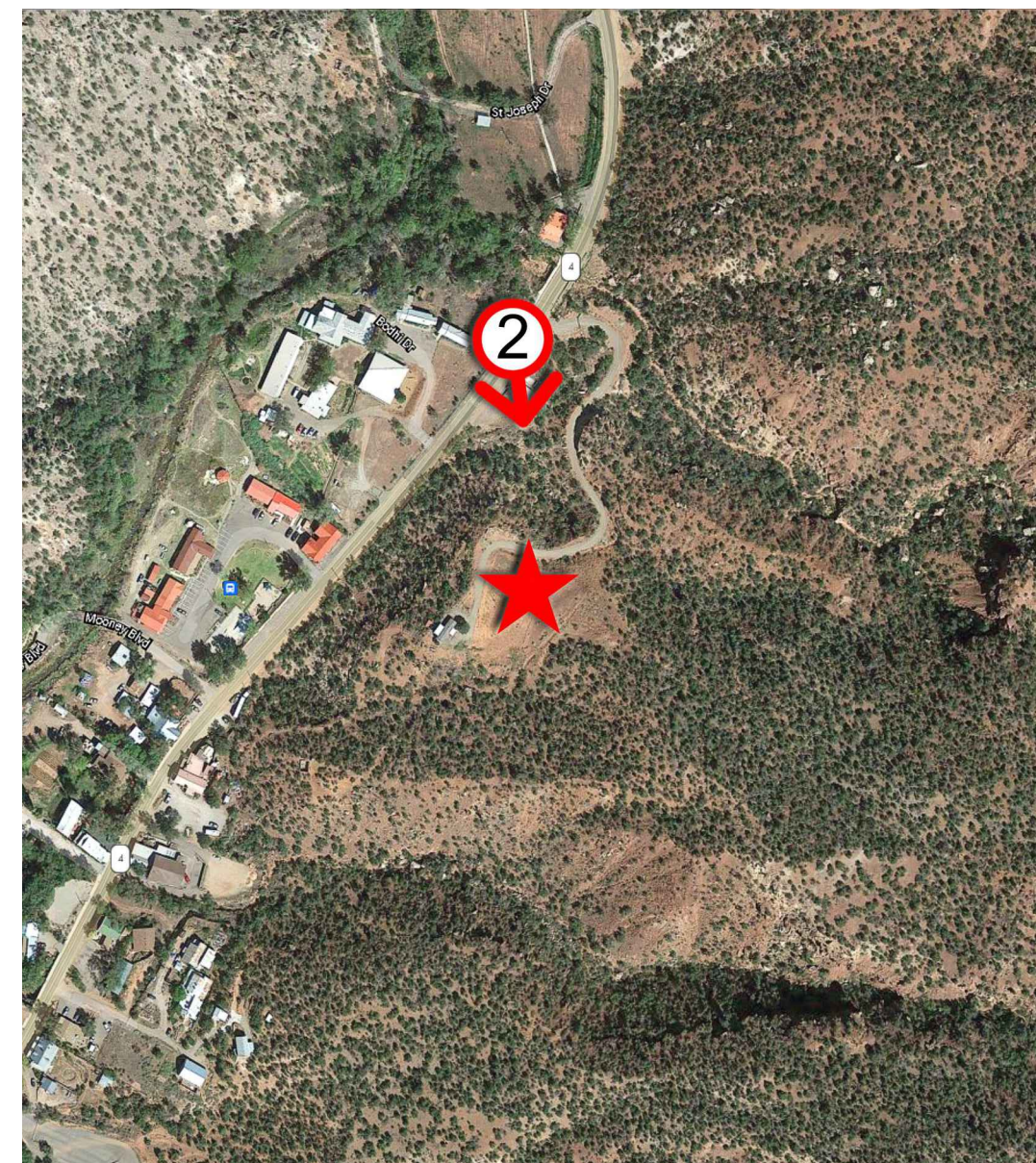
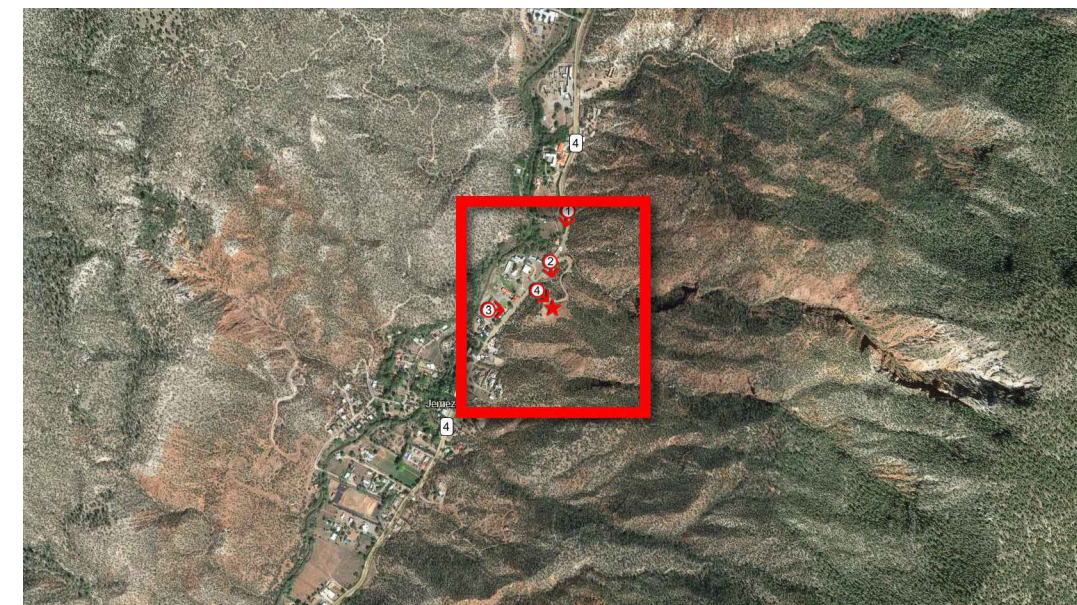
NEW (62'-0" MONOPOLE)



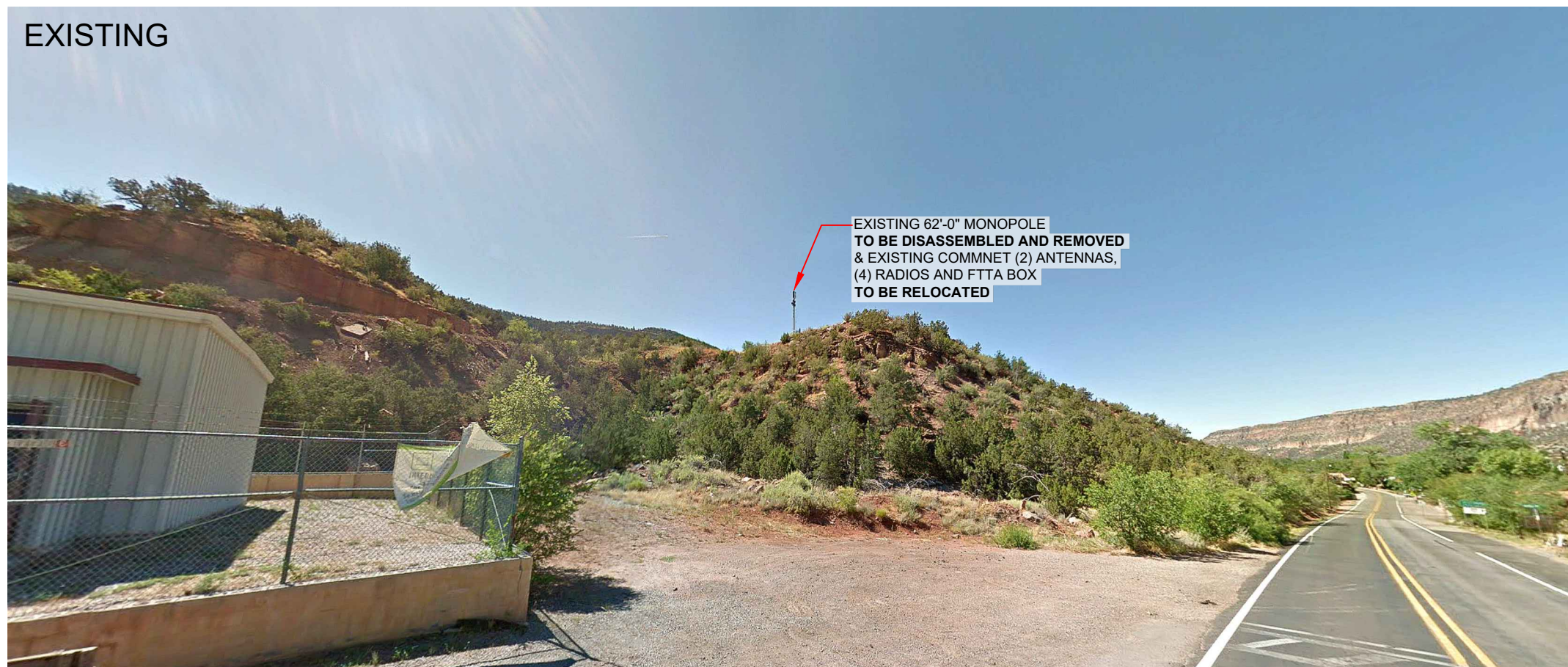
NEW 62'-0" MONOPOLE
W/ NEW AT&T (2) ANTENNAS, (4) RADIOS
AND SURGE SUPPRESSOR
& RELOCATED EXISTING COMMNET
(2) ANTENNAS, (4) RADIOS AND FTTA BOX

NOTE:
NEW 62'-0" MONOPOLE TO HAVE NATINA COLOR
TREATMENT. NEW AT&T ANTENNAS / MOUNTS
AND EXISTING COMMNET ANTENNAS / EQUIPMENT
TO BE PAINTED TO MATCH NATINA COLOR
TREATMENT

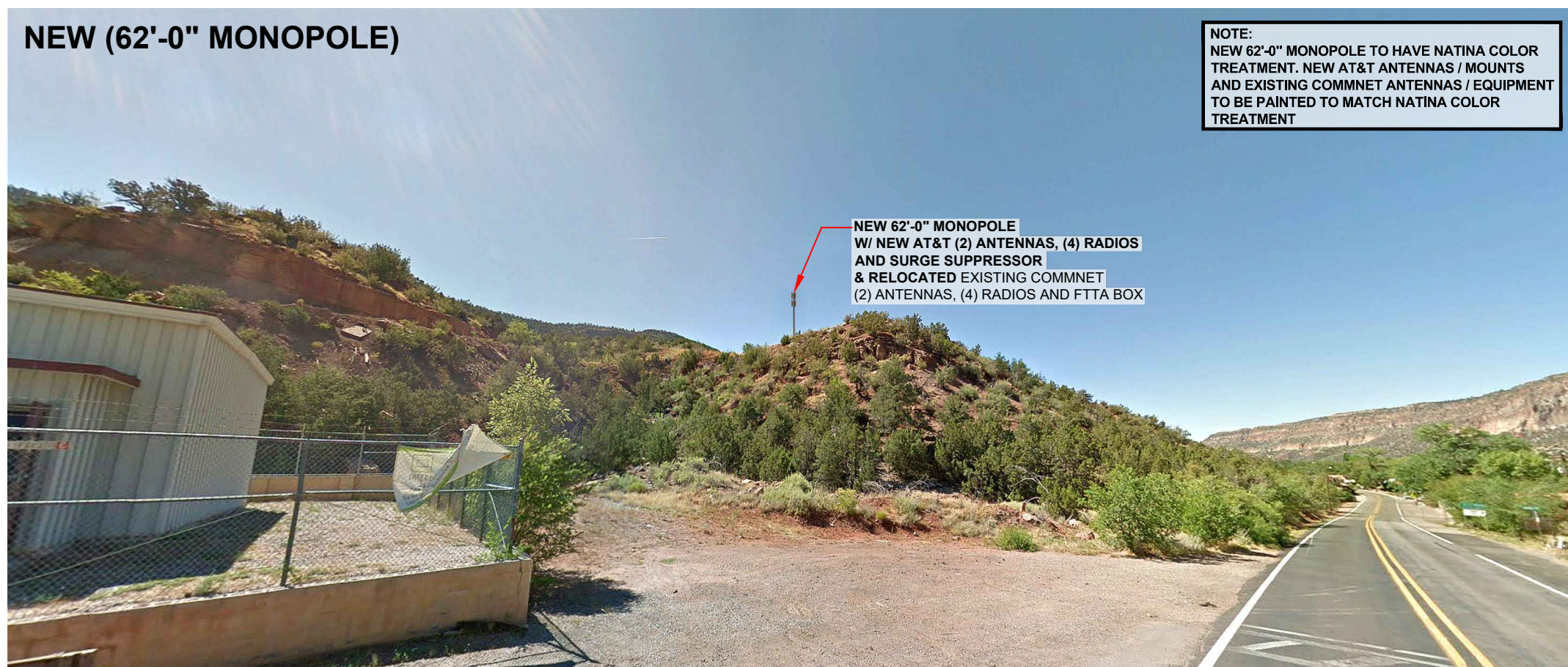
PHOTOSIMULATION VIEWPOINT 2



EXISTING

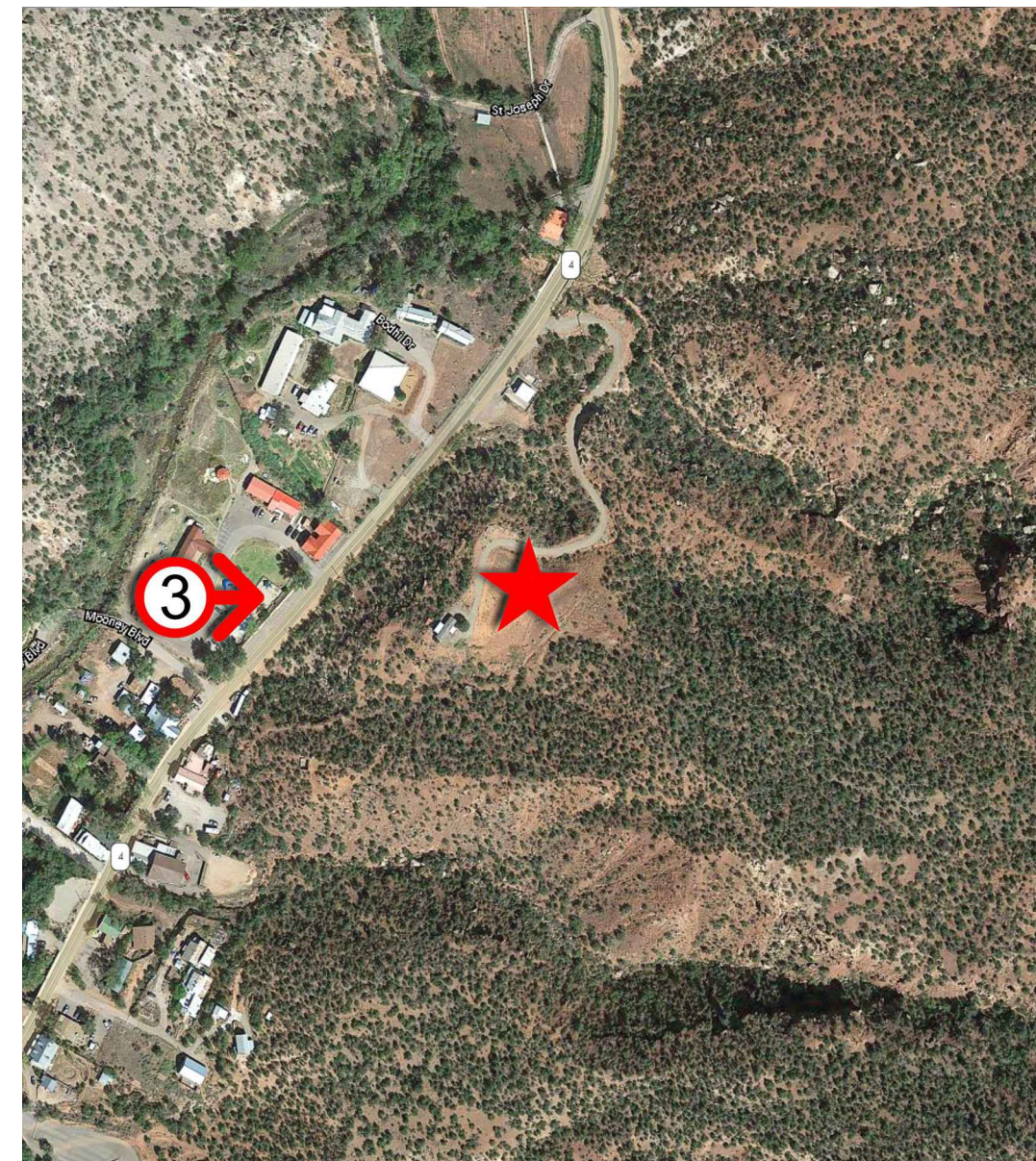
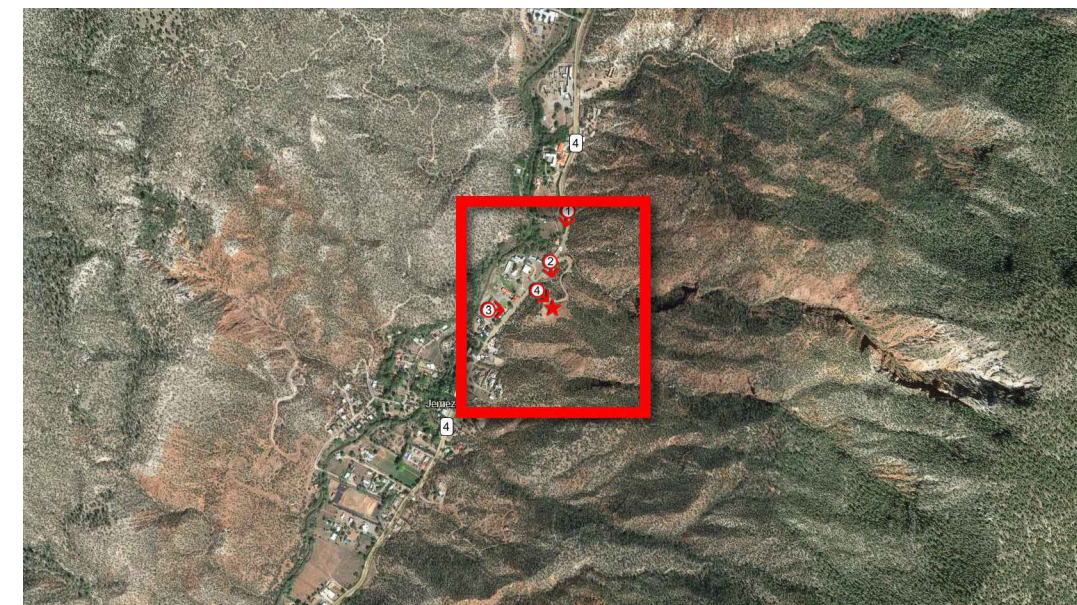


NEW (62'-0" MONOPOLE)



NOTE:
NEW 62'-0" MONOPOLE TO HAVE NATINA COLOR
TREATMENT. NEW AT&T ANTENNAS / MOUNTS
AND EXISTING COMMNET ANTENNAS / EQUIPMENT
TO BE PAINTED TO MATCH NATINA COLOR
TREATMENT

PHOTOSIMULATION VIEWPOINT 3

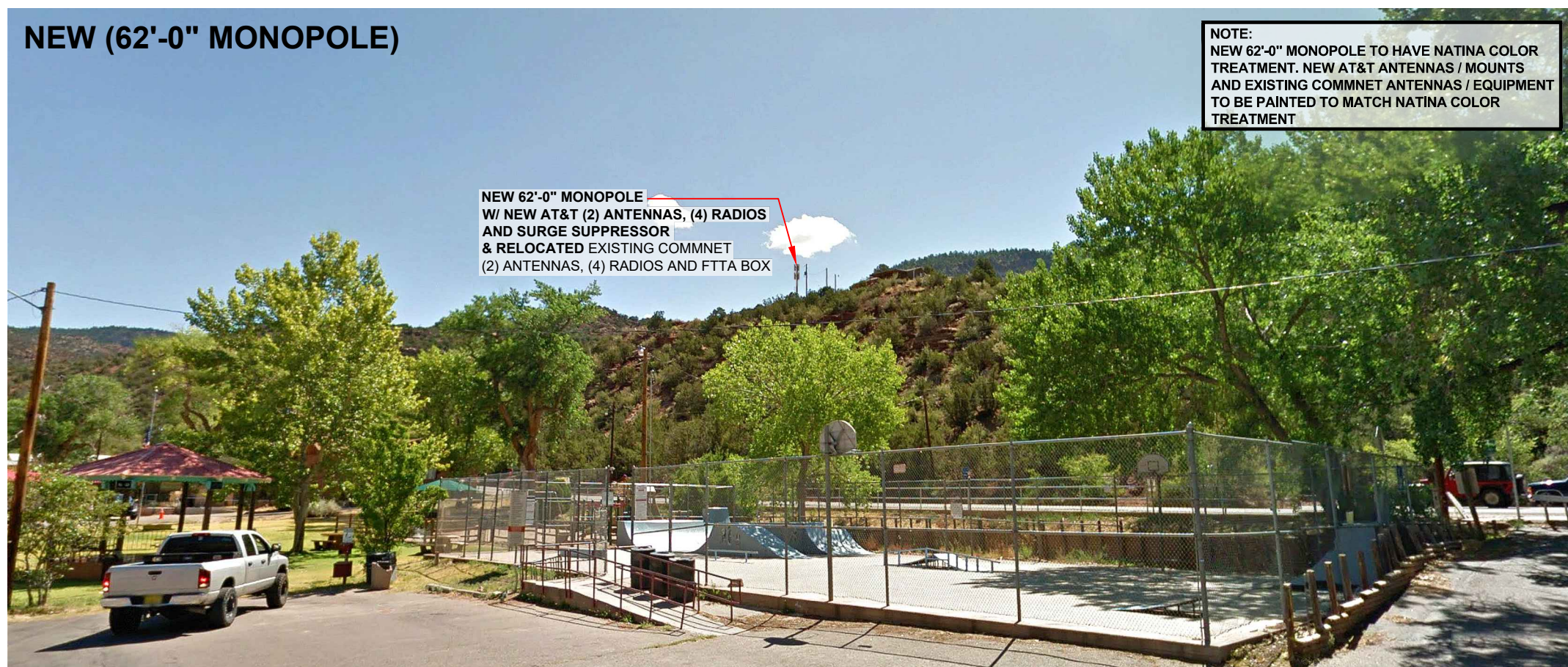


EXISTING



EXISTING 62'-0" MONOPOLE
 TO BE DISASSEMBLED AND REMOVED
 & EXISTING COMMNET (2) ANTENNAS,
 (4) RADIOS AND FTTA BOX
 TO BE RELOCATED

NEW (62'-0" MONOPOLE)



NEW 62'-0" MONOPOLE
 W/ NEW AT&T (2) ANTENNAS, (4) RADIOS
 AND SURGE SUPPRESSOR
 & RELOCATED EXISTING COMMNET
 (2) ANTENNAS, (4) RADIOS AND FTTA BOX

NOTE:
 NEW 62'-0" MONOPOLE TO HAVE NATINA COLOR
 TREATMENT. NEW AT&T ANTENNAS / MOUNTS
 AND EXISTING COMMNET ANTENNAS / EQUIPMENT
 TO BE PAINTED TO MATCH NATINA COLOR
 TREATMENT

PHOTOSIMULATION VIEWPOINT 4

EXISTING

NEW (62'-0" MONOPOLE)

NOTE:
NEW 62'-0" MONOPOLE TO HAVE NATINA COLOR TREATMENT. NEW AT&T ANTENNAS / MOUNTS AND EXISTING COMMNET ANTENNAS / EQUIPMENT TO BE PAINTED TO MATCH NATINA COLOR TREATMENT

EXISTING 62'-0" MONOPOLE TO BE DISASSEMBLED AND REMOVED & EXISTING COMMNET (2) ANTENNAS, (4) RADIOS AND FTTA BOX TO BE RELOCATED

NEW 62'-0" MONOPOLE W/ NEW AT&T (2) ANTENNAS, (4) RADIOS AND SURGE SUPPRESSOR & RELOCATED EXISTING COMMNET (2) ANTENNAS, (4) RADIOS AND FTTA BOX

